

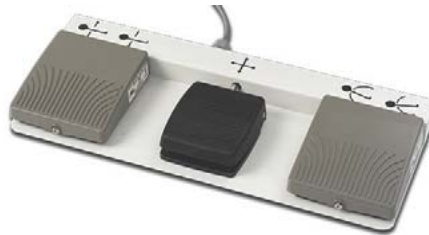
IDI Products Catalog

Aspect™ Series Imaging Tables

MDS Mobile Video Display System

Aspect Table Accessories & Consumables

Quality products for surgical, interventional and diagnostic imaging



idi
Image Diagnostics, Inc.
Safety, Simplicity, Quality

Table of Contents

| | |
|--|----|
| Armboards & Rail-Mounted Accessories..... | 19 |
| Aspect 4-Way Float Top Tables Specifications & Accessory Matrix | 16 |
| Aspect Series Table Accessories | 17 |
| Aspect Table Footswitch Controls | 34 |
| Aspect Table Hand Controls..... | 32 |
| Facial Support & Spinal Imaging Accessories | 24 |
| Index..... | 41 |
| Key Features | 3 |
| MDS Mobile Video Display System..... | 36 |
| MDS Replacement Accessories & Cable Kits | 38 |
| Pain Management and General Imaging Tables Specifications & Accessory Matrix | 15 |
| Product Support & Customer Service..... | 40 |
| Radiation Shields, Table-mounted..... | 22 |
| Tables for Pain Management and General C-Arm Imaging Applications | 5 |
| Tables for Vascular & Interventional Imaging..... | 9 |
| Tabletop Selections for Aspect Mobile Imaging Tables | 4 |
| Urology & GYN Tables..... | 13 |
| Urology Table Accessories: Leg Holders | 27 |
| Urology Table Accessories: Other..... | 29 |

IDI Aspect Series Tables are ETL Listed (IEC, UL & CSA Standards) and CE marked.

Technical Specifications are subject to change without notice.

Key Features

Aspect Series Tables: C-Arm Imaging At Its Best

All Aspect Series tables with cantilevered table-tops are designed to provide these advantages:

- Long, slim-profile wheel base for:
 - Excellent stability and safety
 - Unencumbered C-arm access
 - Very low table weight for easy maneuverability and transport
- Small base pedestal and very large, unencumbered imaging areas: 59 – 72 inches (150 – 183cm), depending on model
- High-quality, carbon fiber tops for excellent fluoroscopic imaging with minimal x-ray attenuation
- Highest quality mechanical components for exceptional durability and reliability.
- Sleek, easy-to-clean base and covers
- Multiple table top styles for optimal design and performance based on customer clinical requirements
- A common platform for a wide range of motorized and manual movements:
 - Application-specific designs, the right price-performance solution for every customer



- Superior C-Arm access
- Exceptional stability & safety
- Both low table weight and...
- High patient weight capacity
- Durable and easy-to-clean design



Aspect Series Imaging Tables Application Selection Chart



•=Typical use ◊=Optional use

| Model | Pain Mgmt. | Ortho, G.I. & General Surgery | Vascular & Interventional | Bariatric Swallow Studies | Urology & GYN |
|-------------|------------|-------------------------------|---------------------------|---------------------------|----------------------|
| EZ-Access | • | • | | | |
| 100 - 100RT | • | • | | | |
| 100RTL | • | • | ◊ | | |
| 100 - 4 | | | • | | |
| 100 - 4T | | | • | | |
| ISR | | | • | | |
| HIGH-TILT | | | | • | |
| 100UCPlus | ◊ | ◊ | | | • |
| 100US | | | | | • (Fertility Clinic) |



Tabletop Selections for Aspect Mobile Imaging Tables

All Aspect Series Tabletops feature very low attenuation, carbon fiber construction. Standard tops may be substituted with optional sizes/styles as shown below at no extra charge.

Aspect 100, 100E, EZ-Access, 100T, 100R, 100RT and 100RTL Tabletops

| | |
|---|--|
|  |  |
| Standard | Optional With facial cutout |
| X100 - 995 | X100 - 733 |
| 24" x 80" 61 x 203cm | 22" x 80" 56 x 203cm |

Aspect 100 - 4 Tabletops

| | |
|---|--|
|  |  |
| Standard | Optional |
| X100 - 517 | X100 - 982 |
| 18" - 30" W x 80" L 45.7 - 76.2 x 203cm | 23.5" - 30" W x 80" L 59.4 - 76.2 x 203cm |

Tables for Pain Management and General C-Arm Imaging Applications

Aspect EZ-ACCESS

- Motorized elevation
- Very low minimum height



Standard top

Catalog # A100-2100

Optional top

- Carbon fiber tabletop with low x-ray attenuation
- Tabletop: 24" x 80" (61 x 203 cm)
- Optional Tabletop: 22" x 80" (56 x 203 cm) with facial cutout
- 68" (172.7 cm) unobstructed imaging area
- Motorized tabletop elevation 21" – 40" (53 – 102cm), including 2" tabletop pad
- Locking swivel casters
- 450 lb. (204 kg) patient weight capacity
- Table weight = 450 lbs. (208 kg)
- 115 VAC operation (230 V optional, must specify with order)
- Battery back-up operation

Accessories included:

- Hand Control
- Tabletop Pad, 2" thick
- Patient Restraint Straps
- Facial cushion, crescent shape
- Disposable covers for facial cushion, box of 50

Tables for Pain Management and General C-Arm Imaging Applications (Continued)

Aspect 100E

Specifications

- Motorized elevation



Catalog # A100-402

Standard top

Optional top

- Carbon fiber tabletop with low x-ray attenuation
- Tabletop: 24" x 80" (61 x 203 cm)
- Optional Tabletop: 22" x 80" (56 x 203 cm) with facial cutout
- 66" (167.6 cm) unobstructed imaging area
- Motorized tabletop elevation 28" – 39.8" (71 – 101 cm), including 2" tabletop pad
- Locking swivel casters
- 450 lb. (204 kg) patient weight capacity
- Table weight = 290 lbs. (132kg)
- 115 VAC operation (230 optional, must specify with order)
- Battery back-up operation

Accessories included:

- Hand Control
- Tabletop Pad, 2" thick
- Patient Restraint Straps
- Facial cushion, crescent shape

Aspect 100T

Specifications

- Motorized elevation
- Trendelenburg tilt



Catalog # A100-658

Standard top

Optional top

- Carbon fiber tabletop with low x-ray attenuation
- Standard Tabletop (#X100-995) 24" x 80" (61 x 203 cm)
- Optional Tabletop (#X100-773) 22" x 80" (56 x 203 cm) with facial cutout 62" (157.5 cm) unobstructed imaging area
- Motorized tabletop movements:
 - Elevation 30" - 41.8" (76-106 cm) including 2" tabletop pad
 - Trendelenburg tilt $\pm 15^\circ$
- Locking swivel casters
- 450 lb. (204 kg) patient weight capacity
- Table weight = 325 lbs. (147 kg)
- 115 VAC operation (230 V optional, must specify with order)
- Battery back-up operation

Accessories included:

- Hand Control
- Tabletop Pad, 2" thick
- Patient Restraint Straps
- Facial cushion, crescent shape
- Disposable covers for facial cushion, box of 50

Tables for Pain Management and General C-Arm Imaging Applications (Continued)

Aspect 100R

Specifications

- Motorized elevation
- Lateral roll



Catalog # A100-662

Shown with optional table top # X100-733 (with facial cutout)

Standard top

Optional top

- Carbon fiber tabletop with low x-ray attenuation
- Standard Tabletop (#X100-995) 24" x 80" (61 x 203 cm)
- Optional Tabletop (#X100-773) 22" x 80" (56 x 203 cm) with facial cutout
- 62" (157.5 cm) unobstructed imaging area
- Motorized tabletop movements:
 - Elevation 30.5" - 42" (77.5-106.7 cm) including 2" tabletop pad
 - Lateral Roll $\pm 20^\circ$
- Locking swivel casters
- 450 lb. (204 kg) patient weight capacity
- Table weight = 395 lbs. (179 kg)
- 115 VAC operation (230 V optional, must specify with order)
- Battery back-up operation

Accessories included:

- Hand Control
- Tabletop Pad, 2" thick
- Patient Restraint Straps
- Facial cushion, crescent shape
- Disposable covers for facial cushion, box of 50

Aspect 100RT

Specifications

- Motorized elevation
- Trendelenburg tilt
- Lateral roll



Standard top

Optional top

Catalog # A100-870

- Carbon fiber tabletop with low x-ray attenuation
- Standard Tabletop (#X100-995) 24" x 80" (61 x 203 cm)
- Optional Tabletop (#X100-773) 22" x 80" (56 x 203 cm) with facial cutout
- 62" (157.5 cm) unobstructed imaging area
- Motorized tabletop movements:
 - Elevation 32.4" - 44.2" (82 - -112 cm) including 2" tabletop pad
 - Trendelenburg Tilt $\pm 15^\circ$
 - Lateral Roll $\pm 20^\circ$
 - Auto return-to-level button and positional memory
- Locking swivel casters
- 450 lb. (204 kg) patient weight capacity
- Table weight = 425 lbs. (193 kg)
- 115 VAC operation (230 V optional, must specify with order)
- Battery back-up operation

Accessories included:

- Hand Control
- Tabletop Pad, 2" thick
- Patient Restraint Straps
- Facial pad, crescent shape
- Disposable covers for facial pad, box of 50

Tables for Pain Management and General C-Arm Imaging Applications (Continued)

Aspect 100RTL

Specifications

- Motorized elevation
- Trendelenburg tilt
- Lateral roll
- Longitudinal tabletop motion



Standard top

Optional top

Catalog # A100-1254

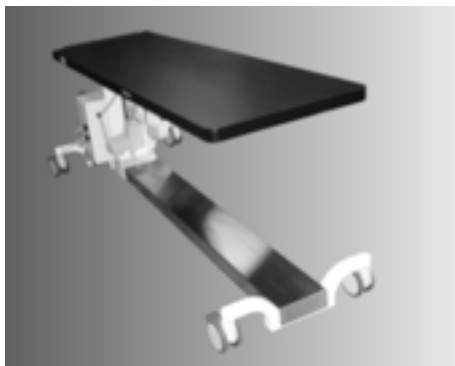
- Carbon fiber tabletop with low x-ray attenuation
- Standard Tabletop (#X100-995) 24" x 80" (61 x 203 cm)
- Optional Tabletop (#X100-773) 22" x 80" (56 x 203 cm) with facial cutout
- 59" (149.9 cm) unobstructed imaging area
- Motorized tabletop movements:
 - Elevation 31.2" - 41.2" (79.2 - 104.6 cm) including 2" tabletop pad
 - Elevation 30.5" - 42" (77.5 - 106.7 cm), including 2" tabletop pad
 - Lateral Roll $\pm 20^\circ$
 - Trendelburg $\pm 15^\circ$
 - Longitudinal travel 10" 12.4cm
 - Auto return-to-level button and positional memory
- Locking swivel casters
- 450 lb. (204 kg) patient weight capacity
- Table weight = 355 lbs. (179 kg)
- 115 VAC operation (230 V optional, must specify with order)
- Battery back-up operation

Accessories included:

- Hand Control
- Tabletop Pad, 2" thick
- Patient Restraint Straps
- Facial cushion, crescent shape
- Disposable covers for facial cushion, box of 50

Stainless steel base covers

Specifications



Catalog # Z100-1628 option for:
Aspect 100E, 100T, 100R & 100RT tables.

Catalog # 100-1629 option for:
Aspect 100-4 and 100RTL tables

Tables for Vascular & Interventional Imaging

Aspect 100-4

Specifications

- 4-Way manual floating tabletop
- Motorized elevation



Catalog # A100-566

Standard

Optional

- Carbon fiber tabletop with low x-ray attenuation
- Standard tabletop (#X100-517)
18" / 30" x 80" (46 / 76 x 203 cm)
- Optional tabletop (X100-982) 23.5" / 30" x 80 (59/72 x 203 cm)
- 72" (182.9 cm) unobstructed imaging area
- Motorized tabletop movements:
 - Motorized Elevation 29.9" – 39.7" (75.9 – 100.8 cm), including 2" tabletop pad
- 4-way manual floating tabletop movements
 - Longitudinal tabletop float 40" (101.6 cm)
 - Transverse tabletop float 10" (25.4 cm)
- Locking swivel casters
- 450 lb. (204 kg) patient weight capacity
- Table weight = 490 lbs. (222 kg)
- 115 VAC operation (230 V optional, must specify with order)
- Battery back-up operation

Accessories included:

- Rail-mounted panning hand control #A270-126
- Tabletop Pad & Patient Restraint Straps
- # A100-435 18" Tabletop Width Extender Board (lateral arms support, for 18" wide top only)

Aspect 100 - 4T

Specifications

- 4-Way manual floating tabletop
- Motorized elevation
- Trendelenburg tilt
- Transverse float

Catalog # A100-1416



- Carbon fiber tabletop with low x-ray attenuation
- Tabletop = 24" x 84" (61 x 213.4 cm)
- 62" (157.5 cm) unobstructed imaging area
- Motorized tabletop movements:
 - Motorized Elevation 31" – 40.9" (78.7 – 103.8 cm), including 2" tabletop pad
 - Trendelenburg Tilt $\pm 10^\circ$ with auto return-to-level function
 - Longitudinal tabletop float 32" (81.3 cm)
- 4-way manual float with panning hand control
- 4-way float lock unless panning hand control is depressed and table is level
- 5" swivel rear casters with electrical locking
- 3" swivel dual front casters
- 450 lb. (204 kg) patient weight capacity
- Table weight = 605 lbs. (274 kg)
- 115 VAC operation (230 V optional, must specify with order)
- Battery back-up operation

Accessories included:

- Rail-mount panning hand control #A270-146
- Tabletop Pad (2" thick) & Patient Restraint Straps

Optional Accessories:

- Footswitch control available for elevate, tilt, and 4-way float lock-release functions
- Rail-mounted radiation shield
- Radiolucent and standard armboards (See "Armboards" section, page 19-20.)
- Catheter tray extension # A100-1769

Tables For Vascular & Interventional Imaging (Continued)

Aspect ISR

Specifications

- 4-Way manual floating tabletop
- Motorized elevation
- Trendelenburg tilt
- Transverse float
- Isocentric roll



Catalog # A100-1902
ISR shown above with X100-2308 tabletop
and optional head extension

Standard top #X100-2308

Optional top #X100-2237



- Cantilevered, carbon fiber tabletop with low x-ray attenuation
- Tabletop dimensions: 84" (213 cm) long, 22" (56cm) wide at imaging end of table and 24" (61cm) wide at pedestal end of table. (Note: There are two tabletop styles available on the ISR table.
- Unobstructed imaging area: 61" (155 cm) or 73" (185 cm) with optional headrest attached (optional headrest requires tabletop X100-2308)
- Tabletop Height: 32" – 40" (81 – 102 cm), including 2" thick
- Motorized tabletop movements:
 - Motorized Elevation: 8" (20.3cm)
 - tabletop pad.
 - Trendelenburg Tilt: $\pm 12^\circ$ with auto stop-at-level function
 - Isocentric-Roll: $\pm 12^\circ$
- 4-Way manual floating tabletop with panning hand control:
 - Longitudinal tabletop travel: 32" (81.3 cm)
 - Transverse tabletop travel: 8" (20.3 cm)
 - Longitudinal float automatically disabled when table is in out-of-level position. Transverse float available regardless of tilt position. Includes lock-out button to prevent inadvertent motorized table movements.
- Multi-caster 3-position caster locking system via pedal on table base: Fully locked, Fully unlocked & Steering lock (center casters only locked) for easy transport and positioning.
- Stainless steel pedestal and base covers
- Patient weight capacity: 450 lbs. (204 kg)
- Table weight: 605 lbs. (274 kg)
- 115 VAC operation (230 V optional, must specify with order)
- Internal battery system. Full operation with or without AC power cord connected.

Accessories included:

- Tabletop Pad, 2"
- Patient Restraint Straps
- Rail-mounted panning hand control for 4-way float and motorized table movements.

Aspect ISR (Continued)

Aspect ISR Optional Accessories

Specifications



ISR A100-1902 table shown with X100-2308 top and optional A100-2317 headrest extension



ISR shown with X100-2308 table top and A100-2322 pedestal catheter tray extension



ISR shown with X100-2308 table top and A100-1769 head-end catheter tray extension

Optional Accessories for Aspect ISR:

- Clamp-on accessory rail: (#A100-1770)
- Side-rail clamp (#C000-0746), rotating, with socket for attachment of accessories with 5/8 inch circular post
- Armboard, quick-release, (#A310-056) rail mounted (requires Clamp-on Accessory Rail)
- VAB Armboard (#A100-2244); carbon fiber, one-piece, extra wide armboard for vascular access procedures (body section slides under patient/table pad). Includes strap and pad.
- Arm Board, carbon fiber, (#A310-059) shoulder mount (attaches by sliding thin section under patient/table pad), flat. Includes pad and strap.
- Footswitch Control (#A100-2071) for Aspect ISR
- Pendant Hand Control (#A100-2170) for Aspect ISR (this controls elevate and tilt functions only. The rail-mounted, 4-way float panning hand control also provides these functions and is included with table)
- Headrest, (#A100-2317) articulating, removable, for Aspect ISR. Requires tabletop X100-2308.
- Tabletop Catheter Tray Extension (#A100-1769), 24" wide, for 100-4T and Aspect ISR. Mounts to pedestal end of table only.
- Imaging End Catheter Tray Extension (#A100-2322) 22" wide, for Aspect ISR - mounts to imaging end of table only. Requires tabletop X100-2308.
- Anesthesia Screen Holder (See page 19-21)
- Articulating rail-mounted radiation Shield, (A610-051) rail-mounted

ISR Tabletop Options

(Must specify tabletop with ISR table order)

Specifications

Standard top #X100-2308

Optional top #X100-2237



Tabletop X100-2308

Tabletop X100-2308

Includes short, recessed side rails 5" (13 cm) in length at imaging end of table facilitate use of removable headrest extension and also facilitate attachment of catheter tray extension at narrow end of table. Two separate catheter tray extensions (page 18) are available: One for the pedestal end of table and one for the imaging end of table. Catheter tray extensions are optional and sold separately.



Optional headrest (A100-2317) is compatible with tabletop X100-2308 only. Headrest extension (page 18) is optional and sold separately.

Tabletop X100-2237

Does not include recessed side rails at imaging end of table. Catheter tray extension may be attached to the pedestal end of table only (pedestal end of table). Optional headrest extension is not available with this tabletop version. Catheter tray extension is optional and sold separately.

Tables for Swallow Studies & Upright Imaging/Patient Loading

Aspect 100HT High-Tilt™

Specifications

- Swallowing studies for post-surgical gastric band adjustment
- Other C-Arm procedures requiring upright patient imaging or loading.

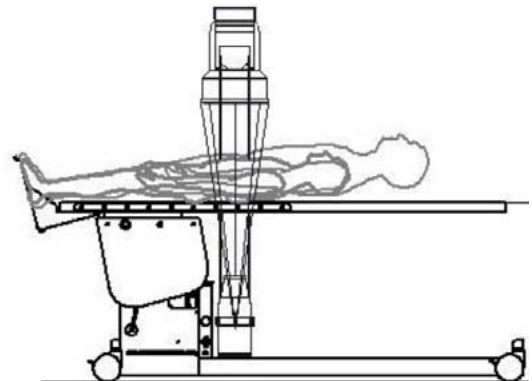
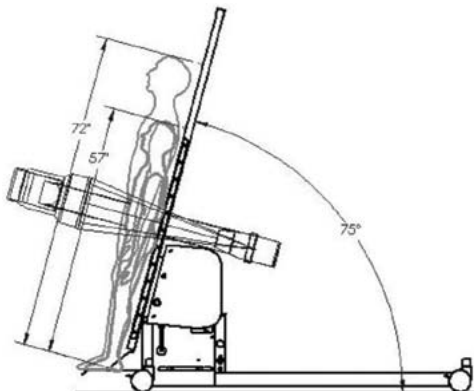


Catalog # A100-1708

- Motorized tilt from horizontal to 75° upright with footswitch operator control
- Tilt speed $\approx 4^\circ/\text{sec}$. (≈ 20 seconds to full stroke)
- Built-in footboard for “step-on” patient loading with table in upright position
- 525 lb. (238 kg) patient weight capacity
- Ultra-stable during tilt motion and in any table position
- Easy C-arm imaging access in any tabletop position
- Carbon fiber tabletop: artifact-free, low x-ray attenuation
- Fixed tabletop height in horizontal position: 32" (81.3 cm)
- Footboard position with table upright: 5" (12.7 cm) above floor
- Tabletop size: 24"W x 80"L (61cm x 203cm)
- Imaging area: 58" (147.3cm)
- Standard US siderails ($\frac{3}{8}$ " x $1\frac{1}{8}$ ") for handgrips attachment
- 115 VAC operation (230 V optional - must specify with order)
- Battery back-up operation
- 5", locking casters and lightweight table for easy transport

Accessories included:

- Tabletop pad, 1" (2" thick pad optional)
- Patient handgrips
- Restraint straps
- Footswitch control



Urology & GYN Tables

Aspect 100UCPLUS

Specifications

- Motorized elevation
- Trendelenburg tilt
- Longitudinal travel
- Transverse travel



Catalog # A100-1517

Leg-holders are not included with the table and must be ordered separately. See "Urology Table Accessories", pages 27-31. May also use any leg-holders with standard US table side-rail attachment.



Table with extension attached.

- Carbon fiber tabletop with low x-ray attenuation.
- Motorized Tabletop motions with hand control and footswitch control:
 - Elevation: 33.3" – 43.1" (79.4 – 104.4 cm) including 2" tabletop pad
 - Trendelenburg Tilt: $\pm 15^\circ$
 - Longitudinal tabletop travel: 10" (25.4 cm)
 - Transverse tabletop travel: 7" (17.8 cm)
- Dimensions
 - Elevation: 33.3" – 43.1" (79.4 – 104.4 cm) including 2" tabletop pad
 - Radiolucent tabletop extension, 34" L x 24" W (86 x 61 cm)
 - 20" L x 25" W (51 x 63.5 cm) imaging area for endourology
 - 34" L x 24" W (86.4 x 61 cm) imaging area on extension
 - Total length of radiolucent imaging area with extension attached: 54" (137 cm)
- Radiographic cassette tray, loads from either side of table.
- 5" (12.7 cm) locking swivel casters
- Patient weight capacity:
 - 525 lb. (238 kg) in endourology position with patient upper body over main tabletop section.
 - 400 lbs. (181 kg) with patient upper body on tabletop extension.
 - Table weight \approx 670 lbs. (\approx 304 kg)
- Table Top Extension weight: 16 lbs
- 115 VAC operation.
(230 V optional, must specify with order)
- Battery back-up operation.
- Built-in footswitch storage tray.

Accessories included:

- Tabletop pad, 2" thick with waterproof covering.
- 1 disposable vinyl table cover.
- Radiolucent tabletop extension with 2" pad
- Hand control pendant.
- Footswitch control
- Collapsible and removable drain bag hoop.
- Disposable drain bag and hose assembly, box of 20
- Removable Radiation Shield Flap for perineal end of table.
- Patient Restraint Straps.
- Armboards (1), rail mounted, with pad and strap.
- Disposable covers for footswitch and radiation shield flap, box of 50.
- Stirrups mounting rail extender kit.
(For boot-style legholders sold by IDI or Allen Medical).

Urology & GYN Tables (Continued)

Aspect 100US

Specifications

- GYN/Fertility Clinic Mobile Imaging Table
- Motorized elevation



Catalog # A100-1479

- Carbon fiber tabletop with low x-ray attenuation
- Tabletop = 24" x 46" (61 x 117 cm)
- 24" W x 32"L (61 x 81 cm) unobstructed imaging area
- Motorized tabletop elevation with foot control:
- Elevation 27" – 39" (68.5 – 99 cm), including 1" tabletop pad
- Locking swivel casters
- 450 lb. (204 kg) patient weight capacity
- Table weight ≈ 395 lbs. (≈179 kg)
- 115 VAC Operation (230 V optional, must specify with order)
- Battery back-up operation

Accessories included

- Tabletop Pad, 1"
- Patient Restraint Straps

Lithotomy Leg-holders (#A100-2248) are not included with the table and must be ordered separately. See Urology Table Accessories pages 25-26. May also use any leg-holders with standard US table side-rail attachment

Pain Management and General Imaging Tables Specifications & Accessory Matrix

●=Standard feature ◆=Optional NA=Not available

| | EZ-Access | 100E | 100R | 100T | 100RT | 100RTL |
|---------------------------------------|--|--|--|--|--|--|
| Elevate (Height without pad) | 19 – 38" 48 – 96.5 cm | 26 - 37.8" 66 - 96 cm | 28.5 - 40.3" 72 – 102 cm | 28 - 39.8" 71 - 101 cm | 30.4 - 42.2" 77 - 107 cm | 31.2 - 41.2" 79 - 105 cm |
| Trendelenburg Tilt | NA | NA | NA | ±15° | ±15° | ±15° |
| Lateral Tilt | NA | NA | 20° | NA | 20° | 20° |
| Longitudinal Tabletop Motion | NA | NA | NA | NA | NA | 10" 25 cm |
| Transverse Tabletop Motion | NA | NA | NA | NA | NA | NA |
| Standard Tabletop Size | 24" x 80" 61 x 203cm | 24" x 80" 61 x 203 cm | 24" x 80" 61 x 203 cm | 24" x 80" 61 x 203 cm | 24" x 80" 61 x 203 cm | 24" x 80" 61 x 203 cm |
| Optional Tabletop Size | 22" x 80" 56 x 203 cm with facial cut-out | 22" x 80" 56 x 203 cm with facial cut-out | 22" x 80" 56 x 203 cm with facial cut-out | 22" x 80" 56 x 203 cm with facial cut-out | 22" x 80" 56 x 203 cm with facial cut-out | 22" x 80" 56 x 203 cm with facial cut-out |
| Imaging Area | 68" 172.7 cm | 66" 167.6 cm | 62" 157.5 cm | 62" 157.5 cm | 62" 157.5 cm | 59" 149.9 cm |
| Patient Capacity | 450 lb. 204 kg | 450 lb. 204 kg | 450 lb. 204 kg | 450 lb. 204 kg | 450 lb. 204 kg | 450 lb. 204 kg |
| Table Weight | 490 lb. 222 kg | 290 lb. 132 kg | 395 lb. 179 kg | 325 lb. 147 kg | 425 lb. 193 kg | 355 lb. 179 kg |
| Tabletop Pad (2" thick) | ● | ● | ● | ● | ● | ● |
| Restraint Straps | ● | ● | ● | ● | ● | ● |
| Facial Support Cushion | ● | ● | ● | ● | ● | ● |
| Pendant Hand Control | ● | ● | ● | ● | ● | ● |
| Foot Control | ◆ | ◆ | ◆ | ◆ | ◆ | ◆ |
| Armboard, rail mounted | ◆ | ◆ | ◆ | ◆ | ◆ | ◆ |
| Armboard, carbon fiber | ◆ | ◆ | ◆ | ◆ | ◆ | ◆ |
| VAB Armboard | ◆ | ◆ | ◆ | ◆ | ◆ | ◆ |
| Clamp-on Accessory Rail | ◆ | ◆ | ◆ | ◆ | ◆ | ◆ |
| Catheter Tray extension | NA | NA | NA | NA | NA | NA |
| Table-Mounted Radiation Shield | ◆ | ◆ | ◆ | ◆ | ◆ | ◆ |
| Saddle Style Radiation Shield | ◆ | ◆ | ◆ | ◆ | ◆ | ◆ |

Aspect Four-Way Float Top Tables Specifications & Accessory Matrix

•=Standard feature ◊=Optional NA=Not available

| | 100 - 4 | 100 - 4T | ISR |
|---------------------------------|----------------------------------|----------------------------|--|
| Elevate (Height without pad) | 27.9 - 37.7" 71 - 96 cm | 29 - 38.9" 73.7 - 99 cm | 30 - 38" 84 - 109 cm |
| Trendelenburg Tilt | NA | ±10° | ±12° |
| Lateral Tilt | NA | NA | 12° |
| Longitudinal Tabletop Motion | 40" float 102 cm | 32" float 81 cm | 32" float 81 cm |
| Transverse Tabletop Motion | 10" float 25 cm | 8" float 20 cm | 8" float 20 cm |
| Standard Tabletop Size | 18/30" x 80" 46/76 x 203 cm | 24" x 84" 61 x 213 cm | 22"/24" x 84" 56 /61 x 213 cm |
| Optional Tabletop Size | 23.5-30" x 80" 59-76 x 203 cm | NA | NA |
| Imaging Area | 72" 182.9 cm | 62" 157.5 cm | 61" 154.9 cm 73" (185.4 cm)with headrest attached |
| Patient Capacity | 450 lb. 204 kg | 450 lb. 204 kg | 450 lb. 204 kg |
| Table Weight | 490 lb. 222 kg | 605 lb. 274 kg | 605 lb. 274 kg |
| Tabletop Pad (2" thick) | • | • | • |
| Restraint Straps | • | • | • |
| Pendant Hand Control | NA | NA | ◊ |
| 4-way Panning Hand Control | • | • | • |
| Foot Control | ◊ | ◊ | ◊ |
| Armboard, rail mounted | NA | ◊ | ◊ |
| Armboard, carbon fiber | ◊ | ◊ | ◊ |
| VAB Armboard | ◊ | ◊ | ◊ |
| Clamp-on Accessory Rail | NA | ◊ | ◊ |
| Catheter Tray extension | ◊ | ◊ | ◊ |
| Headrest extension | NA | NA | ◊ |
| Table-Mounted Radiation Shield | ◊ | ◊ | ◊ |

Aspect Series Table Accessories

Refer to Tables Specification & Accessory Matrix for table compatibility and to identify optional accessories and those that are included with specific table models.

Tabletop Extensions

Tabletop Width Extender Board for 18" Top

Description



Catalog # A100-435

Lateral arms support, includes pads.

- Slides over head-end of table.
- Carbon fiber
- Provides additional width for 18" wide Aspect tabletops.

Tabletop Width Extender Board for 22" top

Description



Catalog # A100-780

Lateral arms support, includes pads.

- Slides over head-end of table.
- Carbon fiber
- Provides additional width for 22" wide Aspect tabletops.

Catheter Tray Extension for Aspect 100-4

Description

Catalog # A100-814

Rail-attached catheter tray extension for Aspect 100-4 vascular table. Dimensions: L = 27", W = 30.5" (68.5 cm x 77.5 cm)

Tabletop Extensions (Continued)

Catheter Tray Extension for Aspect 100-4T and ISR tables

Description



- Rail-attached catheter tray extension for Aspect 100-4T and ISR vascular tables.
- Rail-attached (pedestal end) 24" wide catheter tray extension for Aspect 100-4T and ISR vascular tables.
- Dimensions: L = 27" (68.5 cm), W = 24.4" (61.9 cm)

Catalog # A100-1769

Catheter Tray Extension for Aspect ISR

Description



- Rail-attached catheter tray extension for ISR vascular table.
- Attaches to imaging end of ISR table with X100-2308 tabletop only .
- Dimensions: L = 27" (68.5 cm), W = 20.75" (52.7 cm)

Catalog # A100-2322

Headrest Extension for Aspect ISR table with X100-2308 table top

Description



- Articulating carbon fiber
- Attaches to imaging end of X100-2308 table top only
- Requires ISR tabletop X100-2308.
- Length = 12" (30.5 cm).
- For Aspect ISR table model only.

Catalog # A100-2317

Armboards & Rail-Mounted Accessories

Clamp-on Accessory Rails

Description



Catalog # A100-1007

- Clamps to Aspect Series carbon fiber tabletops to provide side-rail section for rail-mounted accessories.
- Compatible with Aspect 100E, 100EZ, 100R, 100T, 100RT, 100RTL, 100-4T and ISR table models.
- 3/8" x 1-1/8" rail.

Similar model:

- A100-1770 for Aspect 100-4 table model.
- A100-2218 for Aspect UCPlus tabletop extension.

Side-Rail Clamp, Rotating, with EZ Lock Handle

Description



Catalog # C000-0746

- C000-0746 With socket for attachment of anesthesia screen holders or other accessories with 5/8" circular post.

Armboard, Quick Release, Rail-mounted

Description



Catalog # A310-056

- Pivoting armboard.
- Not radiolucent.
- Includes pad and strap.
- Requires clamp-on accessory rail A100-1007 for use on any IDI table where armboard is not mounted to built-in table side rail.

Armboards & Rail-Mounted Accessories (Continued)

Carbon Fiber Armboard , Shoulder mount

Description



Catalog # A310-059
(Shown without pad)

- For all Aspect tables
- Single, pivoting armboard with pad and strap.
- Attaches by sliding the thin support section under patient shoulder and table pad.
- Design permits two armboards to be used simultaneously.

VAB Radiolucent Armboard

Description



Catalog # A100-2244

- Ultra-sturdy and extra-wide, one-piece, carbon fiber armboard for vascular access and angiographic imaging of the arm.
- Attachment channel slides over opposite edge of tabletop to secure armboard to table.
- Armboard position may be rotated. Includes 2" thick pad & strap.

Anesthesia Screen Holder

Description



Catalog # C000-0973

- Rigid rod, single point mount.
- Adjusts vertically 22" to 30" (60 cm to 76 cm) and rotates horizontally.
- Requires a rotating side rail clamp C000-0746.
- If anesthesia screen is to be attached to tabletop area that has no side rail a clamp-on accessory rail is also required.

See clamp-on Accessory Rails on page 19 to determine correct version for specific table model).

Armboards & Rail-Mounted Accessories (Continued)

Anesthesia Screen Holder, Flexible

Description



- Malleable "hoop" design.
- Requires pair of rotating side-rail clamps C000-0746.
- If anesthesia screen holder is to be attached to tabletop area that has no built-in side rail, a pair of clamp-on accessory rails are also required.

See Clamp-on Accessory Rails on page 19 to determine correct version for specific table model.

Catalog # C000-0965

Radiation Shields, Table-mounted

Radiation Shield for Aspect 100-100RTL Tables Description

Catalog # A610-080



- For Aspect Series tables without side-rails including EZ-Access Aspect 100E, 100R, 100T, 100RT, 100RTL and Aspect 100-4T, ISR, Aspect 100C and 100FC tables.
- Clamps to carbon fiber tabletop.
- Snap-on upper sections above level of tabletop is removable.
- Multiple units may be used in combination to increase shielding area.
- 24" x 24"

Radiation Shield, Articulating, Rail-mounted Description

Catalog # A610-051



- For Aspect ISR, 100-4T, 100-4 vascular tables.
- Attaches to table side-rail at base end of table.
- Articulating joint allows shield to conform to table contour.
- Snap-on upper section above level of tabletop is removable.

Radiation Shields Table-Mounted (Continued)

Scatter-Guard Radiation Draping

Description



Catalog # A610-096

- For Aspect EZ-Access Aspect 100E, 100R, 100T, 100RT, 100RTL table models with 24" rectangular tabletop.
- Dimensions: 59" long.
- 24" Draping below tabletop.
- Draping extends along both side and head-end of table.
- Supported by fabric section over tabletop

Similar to photo above
Catalog # A610-092

- For Aspect EZ-Access Aspect 100E, 100R, 100T, 100RT, 100RTL table models with 22" tapered-end tabletop with facial cutout.
- Dimensions: 59" long.
- 24" draping below tabletop.
- Draping extends along both side and head-end of table.
- Supported by fabric section over tabletop

Facial Support & Spinal Imaging Accessories

Facial Cushion, Crescent shaped

Description



Catalog # C000-0597

- Soft, patient facial support cushion for pain management procedures & other patient prone positions.
- Can be used with tabletops that have or do not have built-in facial cutout.

Disposable Covers for Crescent Shaped Facial Cushion

Description



Catalog # C000-0598

- Disposable covers for C000-0597 facial cushion
- Box of 5

Straps & Replacement Armboard Pads

Patient Restraint Straps 3" & 5" (For Aspect non-urology tables)

Description



- One 3" wide and one 5" wide.
- For all Aspect Series tables except Urology/Gyn models. (Similar to photo)

Catalog # C000-0328

Restraint Straps, 3", for Aspect Urology tables

Description



- Restraint Straps, pair, 3" wide.
- For Aspect Series Urology Tables

Catalog # C000-0571

Armboard strap

Description



- Replacement strap for Armboards A310-056, A310-059 and A310-061

Catalog # C000-0455

Armboard Pad, 1/2"

Description



- Replacement pad for Armboards A310-056 and A310-059 when used with 1" thick tabletop pad

(Similar to photo)

Catalog # X100-1655

Straps & Replacement Armboard Pads

Armboard Pad, 1 ½"

Description



Catalog # X100-1607

- For armboard A310—056 and A310-059 when used with 2" thick tabletop pad

VAB Armboard Strap

Description



Catalog # C000-0709

- For use with A100-2244 VAB armboard

VAB Armboard Pad 2"

Description



Catalog # X100-2243

- For use with A100-2244 VAB armboard
- 2" thick pad

VAB Armboard Pad 2"

Description



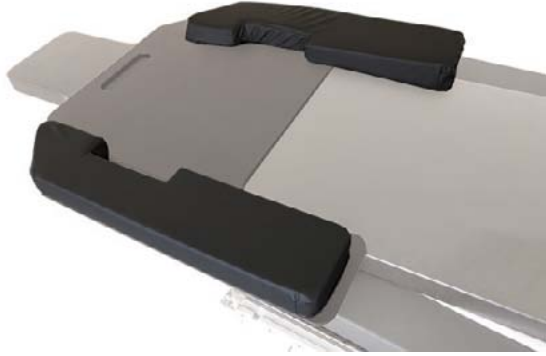
Catalog # X100-1786

- Replacement pad for A100-1809 Armboard (Older-style , boomerang shape)

Straps & Replacement Armboard Pads (Continued)

Pad for ID410 Table Width Extender Board

Description

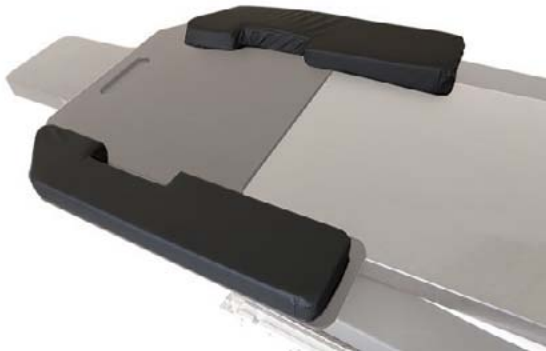


- For ID410 Table Width Extender Board
- 1" thick pad
- Includes 2 pads

Catalog # X100-1661

VAB Armboard Strap

Description



- For ID410 Table Width Extender Board
- 2" thick pad
- Includes 2 pads

Catalog # X100-1755

Urology Table Accessories: Leg Holders

Boot-Style Legholders with Pneumatic Assist

Description



- Includes two C000-0695 boot-style legholders .
- Gas spring height adjustment.
- Includes pads.
- For patients up to 350 lbs. (159 kg).
- Includes 2 side rail clamps C000-0656.

Catalog # A100-2246

Urology Table Accessories: Leg Holders (Continued)

Side-Rail Clamp with Blade-Style Socket

Description



Catalog # C000-0656

- For A100-2246 and A100-2247 Leg Holders.

Heavy Duty Boot-Style Legholders with Pneumatic Assist

Description



Catalog # A100-2247

- Includes two C000-0739 legholders.
- Gas spring height adjustment.
- Includes pads.
- For patients over 350 lbs. (159 kg).
- Includes pair of C000-0656 side rail clamps.

Basic Knee Crutches

Description



Catalog # A100-2248

- Includes two C000-0745 crutches.
- Doughy soft pads for reduced popliteal pressure.
- One easy-to-use handle provides vertical adjustment and 360° horizontal rotation.
- For patients up to 400 lbs. (181 kg).
- Includes pair of C000-0746 side-rail clamps.

Basic Knee Crutches are recommended for Aspect 100US table only. Not recommended for Aspect 100UC*Plus* table.

Rotating Side-Rail Clamp for Basic Knee Crutches

Description



Catalog # C000-0746

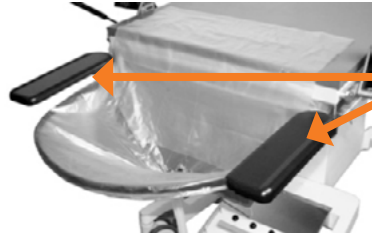
- Easy to lock and rotate.
- For use only with round post stirrup rods such as those on A100-2248 Basic Knee Crutches

Urology Table Accessories: Other

Disposables and Replacement Items for Aspect 100U, 100UC & 100UC Plus

Physician Elbow Support

Description



Catalog # C000-0594

- Elbow supports (pair) with pads.
- For Aspect 100U, 100UC and 100UC*Plus* urology tables

Uro Drain Bag Support Hoop

Description



Catalog # C000-0595

- Collapsible drain bag support hoop
- For Aspect 100U, 100UC and 100UC*Plus* urology tables

Disposable Drain Bag and Hose

Description



Catalog # C000-0612

- Disposable drain bag and hose.
- Box of 20

Fluid Disposal Container, 10 liter capacity

Description



Catalog # C000-0905

- Disposable fluid container for urological procedures.
- 10 liter capacity.
- Stop-cock system allows easy shut-off when changing containers.
- Spigot fits IDI drain bag hose without adapter.
- Container includes SteriGel™ encapsulating powder.
- Box of 10

Urology Table Accessories (Continued)

Disposables and Replacement Items for Aspect 100U, 100UC & 100UC Plus

Fluid Disposal Container, 20 liter capacity

Description

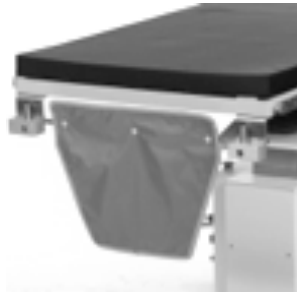


Catalog # C000-0916

- Disposable fluid container for urological procedures.
- 20 liter capacity.
- Stop-cock system allows easy shut-off when changing containers.
- Spigot fits IDI drain bag hose without adapter.
- Container includes SteriGel™ encapsulating powder.
- Box of 10

Removable Radiation Shield Drape

Description



Catalog # Z100-1060

- Replacement lead drape for perineal end of IDI urology tables.
- 0.5mm Pb equivalency.

Radiographic Cassette Tray

Description



Catalog # A100-1001

- For Aspect 100UC Tables.

Disposable Covers for Aspect 100UC & 100UC PLUS Footswitches

Description



Catalog # C000-0492

- Disposable covers for Aspect 100UC and Aspect 100UCPlus footswitches
- Also fits the Z100-1060 Radiation shield flap
- 24" x 20"
- Box of 20

Urology Table Accessories (Continued)
Disposables and Replacement Items for Aspect 100U, 100UC & 100UC Plus

**Disposable Tabletop Protector
For Aspect Series Urology Tables**

Description



- Box of 20

Catalog # C000-0645

Aspect Table Hand Controls

Disposables and Replacement Items for Aspect Series Tables

Hand Control for Aspect 100E, 100US
and EZ-Access Tables



Catalog # K000-0041

Hand Control for Aspect 100R & 100T Tables



Catalog # K000-0054

Hand Control for Aspect 100RT Table



Catalog #K000-0195

Hand Control for Aspect 100RTL Table



Catalog # K000-0197

Hand Control, Panning for Aspect 100 - 4 Table



Catalog # A270-126

Hand Control, Panning for Aspect 100 - 4T Table



Catalog # A270-146

Aspect Table Hand Controls (Continued)

Panning Hand Control for Aspect ISR TABLE



Catalog # A270-0163

Pendant Hand Control for Aspect ISR Table



Catalog # A100-2170

Hand Control for Aspect 100U Urology Table



Catalog #K000-0012

Hand Control for Aspect 100UC Urology Table



Catalog # K000-0158

Aspect Table Footswitch Controls

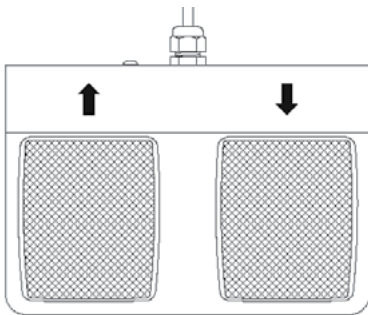
Footswitch Control for 100UC & 100UC PLUS



- Circular center pedal controls 4-way tabletop motion.
- Outer rocker pedals control table elevate and tilt.

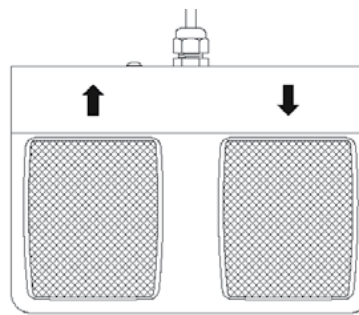
Catalog # A100-1540

Footswitch Control for Aspect 100E, 100US and EZ-Access Tables



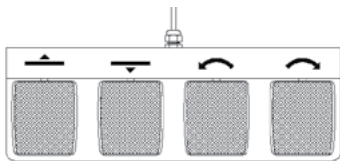
Catalog #100-758

Footswitch Control for Aspect High Tilt Table



Catalog # A100-1823

Footswitch Control for Aspect 100R, 100T and 100EP Tables



Catalog # A100-500

Footswitch Control for Aspect 100RT Table



Catalog # A100-1960

Footswitch Control for Aspect 100RTL



Catalog # A100-1961

Footswitch Control for Aspect 100U Urology Table



Catalog # A100-1533

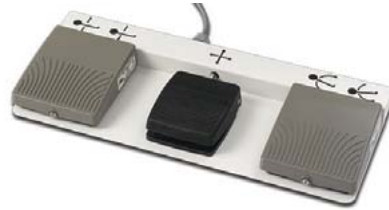
Aspect Table Footswitch Controls (Continued)

Footswitch Control for Aspect 100 - 4T Table



Catalog # A100-1816

Footswitch Control for ISR Table



Catalog # A100-2071

MDS Mobile Video Display System

MDS

Complete with High Definition Video Monitors and Video Router/Controller. System includes:

- Dual-Arm Mobile Display Stand
- Radiance 26" High-Brightness LCD Widescreen Multi-Modality Video Monitors (Qty of 2).
- ConductOR Video Router/Controller with Touchscreen User Interface
- Dual 8" (20cm) "Preview" LCD Reference Monitors, mounted to MDS stand center column.
- Protective covers for 26" Radiance monitors (Qty of 2).
- Video Cable kit, including common cables/connectors needed for connection of C-arm and other equipment that will be connected to MDS Mobile Display System.



Catalog # A280-0330

Dual Arm Mobile Display Stand

- The Aspect MDS stand provides a wide-range of vertical and horizontal positioning for convenient placement of video monitors at the desired location during surgical, interventional and diagnostic procedures.
- The stand includes three (3) equipment shelves for placement of ancillary equipment such as video endoscopy camera control, light source, etc.
- Dual articulating monitor arms with positioning handles and low-force manual motion for easy video monitor positioning.
- Monitor arms provide 36" of fully counter-balanced vertical travel and arm radius extends horizontally up to approx. 76" (193cm) with vertical height up to 96" (244 cm).



- Cable track allows vertical height adjustment of arms without cabling stress.
- Built-in, adjustable equipment racks, 19.75" (50 cm) wide x 16" (40.6 cm) depth, qty. of three (3).
- Lockable double-wheeled 6" casters with cable pushers and rear casters include steering lock position for easy transport.
- Ergonomic transport handles, front and rear, for easy transport and positioning.
- Built-in storage compartment for monitor protective covers. Built-in isolation transformer and AC power strip for connection of video components and up to 5 outlets for ancillary equipment that may be mounted to MDS shelves.

AC Input Power Options

North America Version:

- For connection to 110-120VAC, 60 Hz, 15 amp outlet.
- Includes built-in 1,800 Watt isolation transformer and 15 amp power cord and hospital grade plug.
- Maximum allowable combined load on MDS power strip = 12 amps.

EU Version:

- For connection to 220-240 VAC, 50 Hz, ~10 amp outlet (must specify country plug type).
- Includes 1800 Watt isolation transformer, power cord and plug.
- Maximum allowable combined load on MDS power strip = 7.5 amps.

26" Radiance® G2 HB (High-Brightness) LCD Widescreen High-Definition Video Monitors:

- LED backlight technology for very high brightness.
- Full multi-modality with multiple inputs.
- Switchable source video display and single image, picture-in-picture, or split-screen mode.
- Resolution: 1920 x 1080.
- Aspect ratio: 16:9.
- Brightness: 700 cd/m² (typical).
- Picture size: 22.7" x 12.7" (576 x 324 mm).

MDS Mobile Video Display System (Continued)

MDS

Description

ConductOR™ G2 Video Router/Controller

Medical imaging video router with touch-screen operator control. Allows various inputs to be used without hardwire changes to monitor connections:

- Unit is configured with 8 video input connections including:
 - DVI-D (3)
 - 3G-SDI (1)
 - S-Video (1)
 - Component (1)
 - VGA/SOG (1)
 - DVI-I/RGBS/YPbPr (1)
- Unit is configured with 3 video output connections including:
 - 3G-SDI (2) - these are used for connection to system monitors
 - DVI-D (1) - for connection of external device such as printer, DVR, etc.
- Size: 14" W x 5.2" W x 15.5" D (394 x 46 x 391 mm)



Dual, 8" "Preview" LCD Reference Monitors

- The Preview monitors are mounted to the MDS stand center column above the top shelf for easy visualization of video routing while operating the ConductOR touchscreen control. The left and right Preview monitors serve as visual reference only - to display what is displayed on the left and right 26" monitors that are mounted to the MDS articulating arms.

Padded, Protective Covers for 26" Radiance Monitors

- Foam padded construction for monitor glass protection during transport and storage. Cleanable fabric cover material with Velcro straps for easy cover attachment and removal.

Mobile C-arm Cable Connector Kit:

- Choice of one cable kit for connection to GE OEC, Philips, Siemens or Ziehm mobile C-arm. Must specify with order. Contact IDI regarding purchase of additional cable kits.

MDS Replacement Accessories & Cable Kits

Certain cable kits and accessories are included with the MDS System. Cable kits and accessories listed below are for orders for replacement items or additional cable kits.

Cable Kits

For connection of C-arm and Endoscopy Systems: Customer choice of one of the following cable kits is included with MDS Complete System A280-0330 at no extra charge. Customer must specify the one selected cable kit with MDS System order. Cable kits shown below apply only to orders for replacement or additional cable kits.

MDS Cable kit for GE OEC C-Arm

Description

Catalog # A280-0325

Video connection kit includes:

- (2) 6 ft. internal SVGA HD15 to BNC RGBS (SOG) connector cable
- (1) dual BNC connector panel;
- (1) DVI-I/SVGA HD15 adapter
- (2) external 15 ft. BNC 75 ohm coaxial cable
- (1) Endo Cable Ki:
 - (1) BNC SDI 5 ft.
 - (1) DVI-I 3 ft.
 - (1) SVGA HD15 3 ft.,
 - (1) S Video 3 ft.).

NOTE: This kit also compatible with Ziehm or Philips C-arms if using BNC coax analog video output.

MDS Cable kit for Philips C-Arm

Description

Catalog # A280-0326

Video connection kit includes:

- (2) internal DVI-I to DVI-I 5 ft. cables;
- (1) dual DVI-I connector panel
- (2) external 10 ft. DVI cables
- Endo Cable Kit:
 - (1) BNC SDI 5 ft.
 - (1) DVI-I 3 ft.
 - (1) SVGA HD15 3 ft.
 - (1)-S Video 3 ft.

MDS Cable kit for Siemens C-Arm

Description

Catalog # A280-0326

Video connection kit includes:

- (2) internal SVGA to SVGA 5 ft. internal cables
- (1) dual SVGA connector panel;
- (1) DVI-I/SVGA HD15 adapter
- (2) external 20 ft. external VGA cables
- Endo Cable Kit:
 - (1) BNC SDI 5 ft.
 - (1) DVI-I 3 ft.
 - (1) SVGA HD15 3 ft.
 - (1) S Video 3 ft.).

MDS Replacement Accessories & Cable Kits (Continued)

MDS Cable kit for Ziehm C-Arm

Description

Catalog # A280-0328

Video connection kit includes:

- (2) DVI to DVI 5 ft. internal cables
- (1) dual DVI connector panel
- (2) external 10 ft. DVI cable
- Endo Cable Kit:
 - (1) BNC SDI 5 ft.
 - (1) DVI-I 3 ft.
 - (1) SVGA HD15 3 ft.
 - (1) S Video 3 ft.

NOTE: if using BNC coax video outputs, use kit #A280-0325, above.

MDS Cable kit for Endoscopy System Connection

Catalog # A280-0331

Includes:

- (1) BNC 75 ohm SDI 5ft.
- (1) DVI-I 3 ft.
- (1) SVGA HD15 3 ft.
- (1) S Video 3ft.

Note: This kit is also included with MDS C-arm cable kits.

MDS Monitor Protection Covers



Catalog # X280-0262

- Padded fabric monitor covers for MDS 26" flat panel monitors.
- Velcro attachment straps.

Note: Two covers are included with MDS System A280-0330.

MDS Monitor Handle Security Strap

Catalog # C000-0709

One strap is included with MDS System A280-0330

MDS Shelf

Catalog # P280-0130

- 19.75" wide x 16" depth (50cm x 40.6cm)

Note: Three shelves are included with each MDS System (A280-0330)

Product Support & Customer Service

Hours: 8:00 AM-5:00 PM Eastern Standard Time

Phone: 978-829-0009

Toll Free: 877-304-5434

Fax: 978-829-0027

Email: customerservice@imagediagnostics.com

Website: <http://ImageDiagnostics.com>

Index

A

Anesthesia Screen Holder 20
Armboard Pad 25
Armboards 19, 22
Armboard strap 25
Aspect 100-4 9
Aspect 100 - 4T 9
Aspect 100E 6
Aspect HT High-Tilt 12
Aspect 100R 7
Aspect 100RT 7
Aspect 100RTL 8
Aspect 100T 6
Aspect 100UCPLUS 13
Aspect 100US 14
Aspect EZ-ACCESS 5
Aspect ISR 10-11
Aspect ISR Optional Accessories 11

B

Base covers 8

C

Cassette Tray, Radiographic 30
Catheter Tray Extension 19, 22
Catheter Tray Extensions 17-18
Clamp, Rotating for Basic Knee Crutches 28
Crutches, Knee 28

D

Disposable Covers for Crescent Shaped Facial Cushion 24
Disposable Drain Bag and Hose 29
Drain Bag and Hose, Disposable 29

E

Elbow Support 29

F

Facial Cushion 24
Fluid Disposal Container, 30
Fluid Disposal Containers 29
Footswitch Controls 34-35
Footswitch covers 30
Four-Way Float Top Tables Specifications & Accessory Matrix 16

G

General Imaging Table Specifications and Accessory Matrix 15
General Purpose Tables 5

H

Hand Controls 32
Headrest Extension 18

I

ISR Tabletop Options 11

K

Knee Crutches 28

L

Legholders 27
Legholders, Boot style 28

M

MDS Mobile Display System 36

P

Pad, Armboard 25
Pad for Table Width Extender Board 27
Pain Management Specifications and Accessory Matrix 15
Pain Management Tables 5

R

Radiation Shield Drape 30
Radiation Shields, Table-mounted 22
Radiographic Cassette Tray 30
Restraint Straps 25

S

Side-Rail Clamp 19, 22, 28
Side-Rail Clamp for Basic Knee Crutches 28
Spine Positioning System 24
Stainless steel base covers 8
Strap, Armboard 25
Support Hoop, Uro Drain Bag 29

T

Tabletop Extensions 17
Tabletop Protector, Aspect Urology Tables 31
Tabletop Selections for Aspect Mobile Imaging Tables 4
Tabletop Width Extender Boards 17

U

Uro Drain Bag Support Hoop 29

V

VAB Armboard Pad 26
VAB Armboard Strap 26, 27
VAB Radiolucent Armboard 20

W

Width Extender Boards 17

This page left intentionally blank